



Series: SPS5-TX-24VDC

Off-grid Solar Power System For 4-20mA Transmitter Applications



FEATURES & BENEFITS

- 5-day Minimum System Reserve Power
- Provides Regulated 24 Vdc Output
- Weatherproof NEMA 4, 4X Enclosure
- Preassembled, Prewired, Ready-To-Install
- Deep-cycle Maintenance Free Battery

APPLACATIONS

- Temperature Transmitters
- Flow, Level or Gas Transmitters
- Strain & Vibration Transmitters
- pH & Conductivity Transmitters
- Humidity (RH) Transmitters

DESCRIPTION

Models come pre-wired and include a weatherproof enclosure with a gasketed hinged door. Each model includes all the required system components to get you up and running right out of the box. Just mount and connect the included solar panel, Install and connect your equipment, flip the internal circuit breaker and you done.

Solar Panel

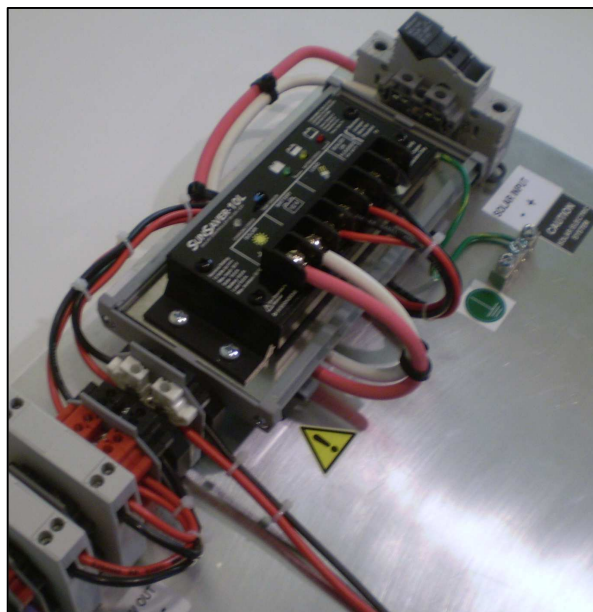
High performance design that provide excellent low light performance. Panels feature a heavy duty extruded aluminum frame with high transparency, low-iron tempered glass.

Charge Controller

Specifically designed for deep-cycle charging, the controller in this system features precise voltage and current regulation and over voltage cut off protection.

Deep-cycle SLA Battery

Maintenance free, long life, high-energy sealed Lead Acid design provides years of reliable service under the most extreme conditions.



GENERAL SPECIFICATIONS

Operating Temperature: -40 to 140 °F (-40 to 60 °C)

Enclosure: Fiberglass/Plastic Blend NEMA 4X

Minimum Battery Reserve Time: 5 days (120 hrs)

Regulated Output: 24 Vdc

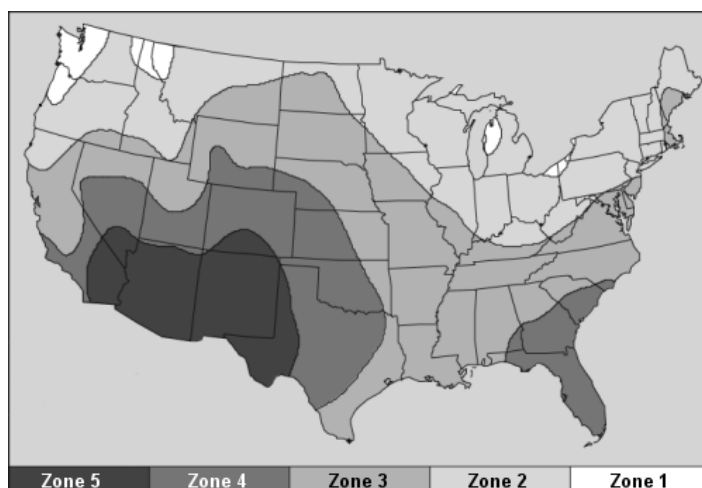
Estimated Battery Life: 4+ Years*

Series: **SPS5-TX-24VDC**

Complete System Includes Solar Panel, Charge Controller, 24Vdc Dc-dc Converter Deep-cycle Battery, weatherproof Fiberglass Enclosure, Earth Grounding Kit, Solar Power Cables, Panel and Enclosure Mounting Kit.

How to Select the Correct Solar Power System for Your 4-20mA Transmitter Application

1. Identify the zone your system will be installed from the map on the right.
2. Use the model number chart below to locate the correct "Recommended Zone" and select your model number.



Model Number	SPS5-TX-24VDC-20W-22	SPSA-12VDC-30W-22
Recommended Zone	Zone 4, Zone 5	Zone 1, Zone 2, Zone 3
Solar Panel	20 Watt, 18V	30 Watt, 18V
Charge Controller	7 A	7 A
Battery Capacity	12V, 22 Ah	12V, 22 Ah
Regulated Output Voltage For 4-20mA Transmitter	24Vdc	24Vdc
Load-watts/day Capacity	1.2 Watts	1.2 Watts
Battery Reserve Time @ 1.2 Watts Drain	5-days (120hrs)	5-days (120hrs)

*Battery life is dependent on total system load, depth of charge cycles and ambient temperature conditions.

Note: Continued product improvements make specifications subject to change without notice.

Check www.imagineinstruments.com for the latest product information and updates

© 2013 :: Imagine Instruments LLC :: 7365 Main Street, #176 :: Stratford, CT 06614 :: p. (855)574.6243

e-mail: info@imagineinstruments.com :: www.imagineinstruments.com

Released: 27 June, 2013 :: Rev: A