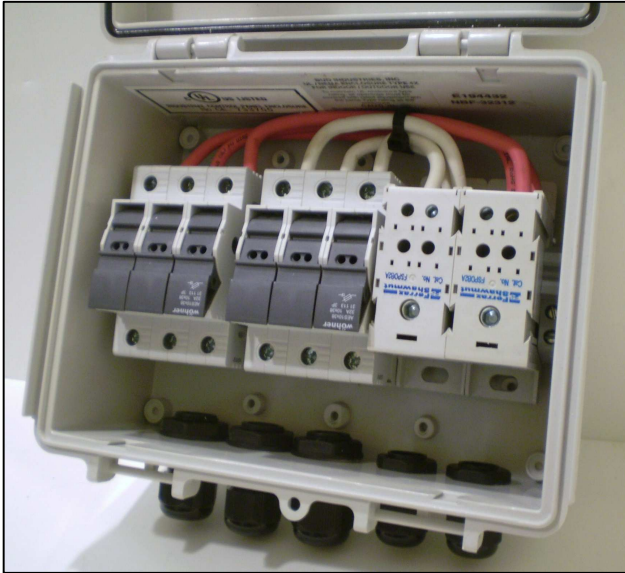




Series: ESCB-XL

Dual Fused Solar Combiner For Use With Transformerless Inverters



Model: **ESCB-XL-PC-3** Shown

FEATURES & BENEFITS

- Both Positive & Negative Fused Strings
- Available in 2 or 3 String Configuration
- Continuous Duty Rated at 600 Vdc
- 32 Amp Rated Fuse Holders
- All UL Listed & Compliant Components
- NEMA 4, 4X Fiberglass or Polycarbonate Enclosure
- Includes Cable Glands, Grounding & Mounting Kits

APPLACATIONS

- Remote Solar Power Systems
- Transformerless Solar Inverter System

DESCRIPTION

ESCB-XL Series - Dual Fused Solar Power Combiner Boxes are rugged combiners that feature both positive and negative PV input string fusing. Features include UL listed NEMA 4X rated enclosures, touch-safe fuse holders/distribution blocks and optional 500V lightning/surge protection. Models are available in 2 or 3 string setup and are rated for up to 600V. Dual fused models are preferred when transformerless inverters are used.

All Models Include: UL Listed Enclosure, Touch-safe Fuse Holders/Distribution Blocks, Input/output Cable Glands, Safety Labels, and Mounting Ears.



NEMA 4, 4X Enclosures



Touch-safe Fuse Holders



Input/output Cable Glands



Distribution Blocks



Polycarbonate model can be horizontally mounted

Series: ESCB-XL

Weatherproof Enclosures

Weatherproof, UL listed, NEMA 4, 4X rated enclosures. Models are available with Fiberglass/Plastic Blend or PC/PBT Plastic.

Fuse Holders

UL compliant, fuse holders feature a 32A, 600V rating and accept standard 10 x 38mm fuses.

Power Distribution Block

These UL listed blocks feature a strong base made from high impact plastic and a 600V rating.

GENERAL SPECIFICATIONS

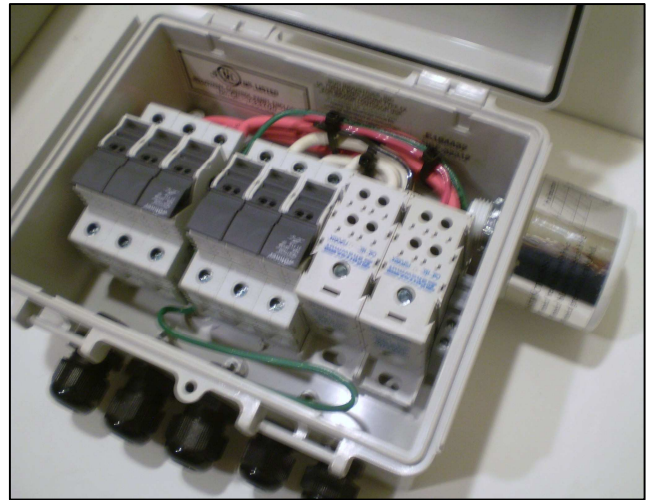
Operating Temperature: -40 to 130 °F (-40 to 60 °C)

Enclosure: Fiberglass/Plastic Blend or PC/PBT Plastic

Enclosure Rating: NEMA 4, 4X, UV Stabilized

Optional Lightning/Surge Protection: 500V

Models with Lightning/Surge Protection Available



Model: **ESCB-XL-FG-3-LP** with Lightning/Surge Option



WARNING: Solar Power can produce high levels of voltage and current. To prevent property damage and/or personal injury installation, wiring and maintenance of this product should only be done by a trained licensed professional.

FIBERGLASS ENCLOSURE MODELS

Model Number	ESCB-XL-FG-2	ESCB-XL-FG-3
Fused Poles	2 Positive, 2 Negative	3 Positive, 3 Negative
Input Wire Size	8-14 AWG	8-14 AWG
Output Wire Size	2/0-14 AWG	2/0-14 AWG
Voltage Rating	600 Vdc	600 Vdc
Input Fuse Max Rating	30 Amps	30 Amps
Max Combined DC Current	60 amps	90 amps
Enclosure Dimension	9.6 x 7.8 x 4.8" (245 x 197 x 122 mm)	9.6 x 7.8 x 4.8" (245 x 197 x 122 mm)

POLYCARBONATE ENCLOSURE MODELS

Model Number	ESCB-XL-PC-2	ESCB-XL-PC-3
Fuse Poles (Size)	2 Positive, 2 Negative	3 Positive, 3 Negative
Input Wire Size	8-14 AWG	8-14 AWG
Output Wire Size	2/0-14 AWG	2/0-14 AWG
Voltage Rating	600 Vdc	600 Vdc
Input Fuse Max Rating	30 Amps	30 Amps
Max Combined DC Current	60 amps	90 amps
Enclosure Dimension	7.9 x 5.9 x 3.9" (200 x 150 x 100mm)	7.9 x 5.9 x 3.9" (200 x 150 x 100 mm)

Add "-LP" to part number for model with 500V lightning/surge protection. **Example: ESCB-XL-PC-3-LP**

Note: Continued product improvements make specifications subject to change without notice. Check www.imagineinstruments.com for the latest product information and updates

© 2013 :: Imagine Instruments LLC :: 7365 Main Street, #176 :: Stratford, CT 06614 :: p. (855)574-6243
e-mail: info@imagineinstruments.com :: www.imagineinstruments.com

Released: 19 July, 2013 :: Rev: A