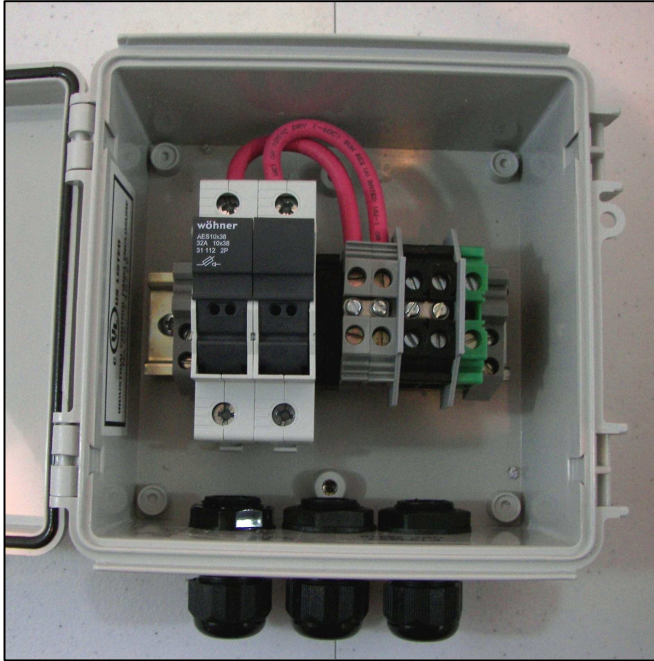




Series: ESCB-XA

## Economical, Compact Solar Power Combiner Box



### FEATURES & BENEFITS

- Models for 2 or 3 String Configuration
- Continuous Duty Rated at 600 Vdc
- Touch-safe Fuse Holders
- All UL Compliant Components
- Weatherproof, Non-conductive Box
- Includes Input Circuit Cable Glands

### APPLACATIONS

- Remote Solar Power Systems
- Reduces Wiring to Inverter Box

### DESCRIPTION

ESCB-XA Series – Economical, compact, Solar Power Combiners feature a weatherproof, non-conductive, UL listed enclosure. Models are available for 2 or 3 string configurations and are rated for 600 Vdc continuous duty.

*All Models Include: UL Listed Enclosure, Touch-safe Fuse Holders, Input/output Wiring Cable Glands, Safety Labels and Mounting Bracket.*



NEMA 4X Enclosure



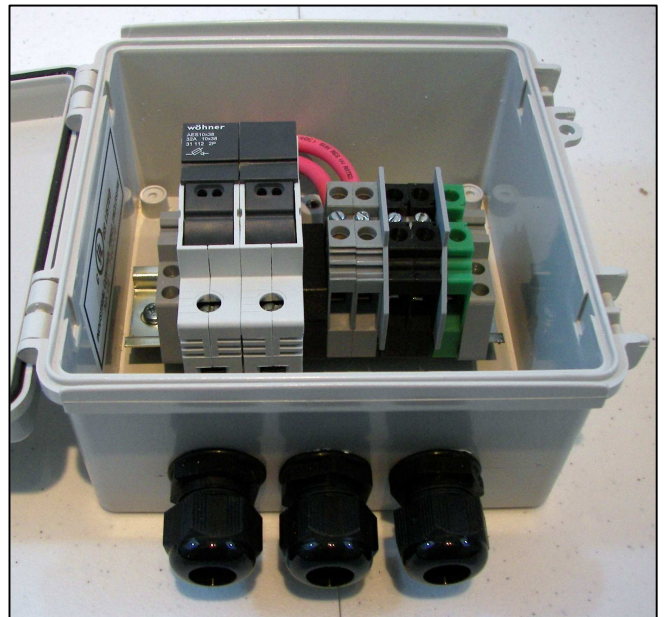
Wall Mounting Kit



Input/output Cable Glands



Safety Labels



## Series: ESCB

### Weatherproof Enclosure

Weatherproof, UL listed, NEMA 4X rated enclosure. Design includes plastic hinges and a gasketed lid for outstanding corrosion resistance.

### Fuse Holders

UL compliant, touch-safe fuse holders feature a 690 Volt rating and are designed for cylindrical 10 x 38mm fuses.

### Din-rail Distribution Blocks

These UL listed components feature a strong base made from high impact plastic and is rated for use up to 600 Volts.

### System Labeling

Each box includes a complete set of industry standard safety labels.

### General Specifications

Operating Temperature: -40 to 130 °F (-40 to 60 °C)

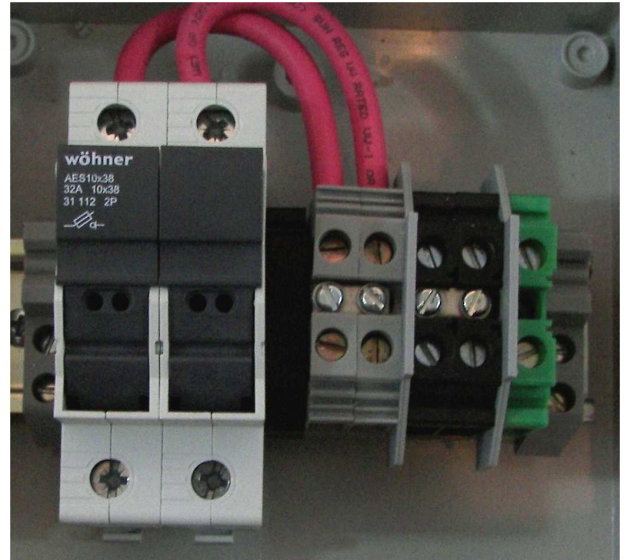
Enclosure Size: 5.9 x 5.9 x 3.54" (150 x 150 x 90 mm)

Enclosure: Material: PC/PBT Blended Plastic

Enclosure Rating: NEMA 4X, UL Listed

Fuse Size: 10 x 38mm

*All Models Include: UL Listed Enclosure, Touch-safe Fuse Holders, Input/output Wiring Cable Glands, Safety Labels and Mounting Kit*



Model: ESCB-2A



**Caution: Electrical Shock hazard. This product must be installed and wired by a trained licensed professional.**

### Available Models

Model Number	ESCB-2A	ESCB-3A
Fused Input Circuits	2	3
Input Wire Size	8-14 AWG	8-14 AWG
Output Wire Size	8-14 AWG	8-14 AWG
Earth Ground Terminals	1 Ea, 8-14 AWG	1 Ea, 8-14 AWG
Max Voltage Rating	600 Vdc	600 Vdc
Max Current Per Input Circuit	15 Amps	15 Amps
Max Total DC Output Current	30 amps	45 amps

Note: This product is designed to be operated with 5, 7, 10 or 15 Amp fuses only (Does Not Include Fuses).

Note: Continued product improvements make specifications subject to change without notice. Check [www.imagineinstruments.com](http://www.imagineinstruments.com) for the latest product information and updates

© 2014 :: Imagine Instruments LLC :: 4500 Williams Drive, Ste 212-318 :: Georgetown, TX 78633 :: p. (855)574-6243  
e-mail: [info@imagineinstruments.com](mailto:info@imagineinstruments.com) :: [www.imagineinstruments.com](http://www.imagineinstruments.com)

Released: 1 March, 2014 :: Rev: A