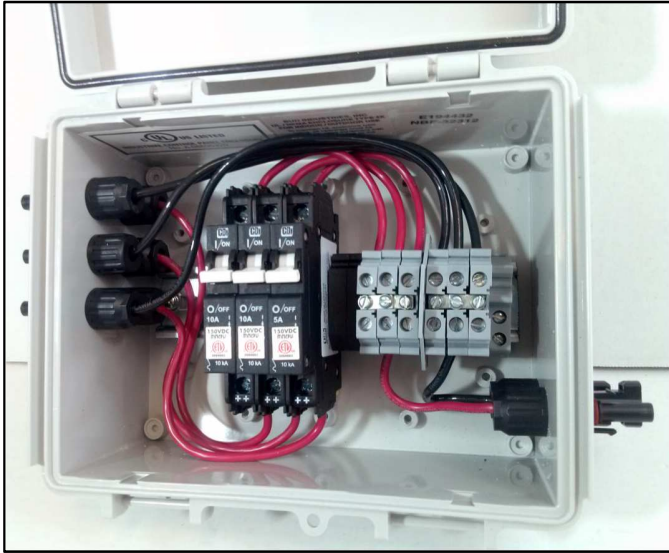




Series: CSCB-CB-3-PW

Pre-wired Solar Power Combiner with Circuit Breakers



Model CSCB-CB-3-PW-101010 Shown

FEATURES & BENEFITS

- Pre-wired 3-String Configuration
- Continuous Duty Rated at 150V DC
- Touch-safe Circuit Breakers
- Compact Weatherproof, Non-conductive Box
- All UL Compliant Components Used
- Includes Input / Output MC4 Connectors

APPLACATIONS

- Remote Solar Power Systems
- Reduces Wiring to Inverter Box
- RV, Sail Boat Solar Power System

DESCRIPTION

CSCB-CB-3-PW Series - Compact, Solar Power Combiner features a weatherproof, non-conductive enclosure. This model is 3-string configuration and available with 5, 6, 7, 8, 9 or 10 Amp circuit breakers. Circuit breakers are rated for 150V DC continuous duty per string. Pre-wired MC4 connectors for input strings and combined output.



Pre-wired MC4 Connectors



Mounting Ears



Solar Circuit Breakers



Safety Label



Weatherproof Enclosure with Gasketed Lid

Series: CSCB-CB-3-PW

General Specifications

Operating Temperature: -40 to 130 °F (-40 to 60 °C)

Enclosure Size: 9.6 x 7.8 x 4.8" (245 x 197 x 122 mm)

Enclosure: Material: PC/PBT Blended Plastic

Enclosure Rating: NEMA 4X, UL Listed

Available Models

Model Number	CSCB-CB-3-PW-555	CSCB-CB-3-PW-666	CSCB-CB-3-PW-777
Input Circuits/ Breakers	3	3	3
Input Solar Cable Connection	MC4	MC4	MC4
Output Solar Cable Connection	MC4	MC4	MC4
Max Voltage Rating	150V DC	150V DC	150V DC
Circuit Breaker Rating	5 Amps	6 Amps	7 Amps
Max Total DC Output Current	15 Amps	18 Amps	21 Amps

Model Number	CSCB-CB-3-PW-888	CSCB-CB-3-PW-999	CSCB-CB-3-PW-101010
Input Circuits/ Breakers	3	3	3
Input Solar Cable Connection	MC4	MC4	MC4
Output Solar Cable Connection	MC4	MC4	MC4
Max Voltage Rating	150V DC	150V DC	150V DC
Circuit Breaker Rating	8 Amps	9 Amps	10 Amps
Max Total DC Output Current	24 Amps	27 Amps	30 Amps

Note: Continued product improvements make specifications subject to change without notice.

Check www.imagineinstruments.com for the latest product information and updates

© 2016 :: Imagine Instruments LLC :: 4500 Williams Drive, Ste 212-318 :: Georgetown, TX 78633 :: p. (855)574-6243
 e-mail: info@imagineinstruments.com :: www.imagineinstruments.com

Released: 7 April, 2016 :: Rev: A